

**Spacious 2 bedrooms 2 full baths Kingstowne condo in Alexandria, VA
Close to Fort Belvoir Pentagon, Andrews, Bolling, Quantico & DC Airport
\$1800/month, Available July 1, 2016**

Call 703-472-8189 or Email to Lydia.guerrero@gmail.com

Top floor 1200-sf unit. Open floor plan. Living Room with fireplace, open to tiled solarium with new windows. Vaulted ceiling & skylights in kitchen and master bath (with double sinks and garden tub). Remodeled kitchen, added counter/cabinet/pantry. Newer floor, carpet and paint. Spacious master suite. Ceiling fans. Central AC. New Heater. Energy efficient lights. Washer/dryer in unit. Plenty of parking. Convenient location, beautiful setting. 1 dog under 20 lb. ok with \$500 deposit. Community pools/fitness centers. 5 min from Ft Belvoir/Blue Line. 15 min from 495/395/95. 6 metro stops to DCA airport. Close to shops & recreation. Available July 1, 2016. Credit check per adult. Deposit and Renter Insurance required. 1-3 yr lease. Non-smoking unit. Check <http://www.kingstowne.org/> for all amenities.



Living Room-1



Living Room-2, showing Solarium



Dining Room



Kitchen-1



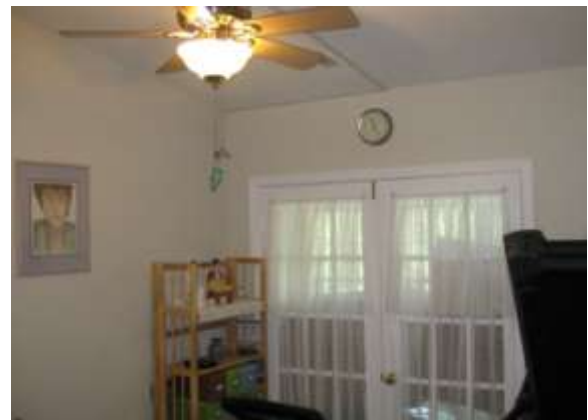
Kitchen-2 and 3



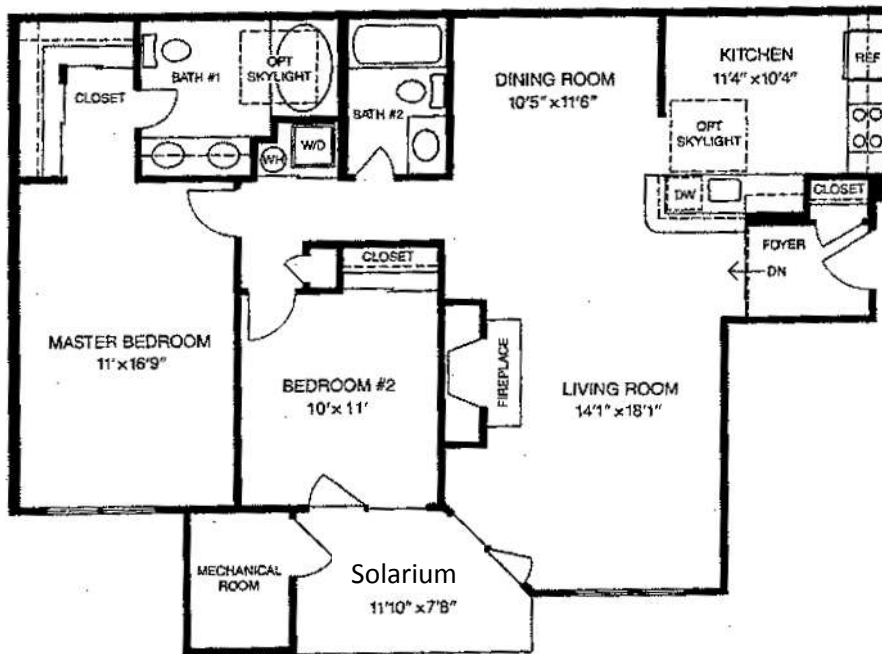
Master Bedroom



Master Bathroom (garden tub behind curtain, skylight above)



Guest Bedroom (used as home gym)
French Doors also open to Solarium



Floor Plan



Unit K

Exterior Picture

The space with the 3 windows is the solarium. The space with the 2 windows is the living room. The master bedroom is on the other side of the solarium and beyond the range of the picture.

This condo is part of the Stratford Place Condominium community in Kingstowne.

For Kingstowne community website, please visit www.kingstowne.org

For more Information, please contact lydia.guerrero@gmail.com or call 703-472-8189.